

Speed Queen

**ON-PREMISES
WASHER-EXTRACTORS**

18 lb (8 kg)

25 lb (11 kg)

35 lb (16 kg)

55 lb (25 kg)

75 lb (34 kg)

100 lb (45 kg)

135 lb (61 kg)

165 lb (75 kg)



Speed Queen[®]

BUILT BETTER TO LAST LONGER

LET SPEED QUEEN LEAD THE WAY...

As America's largest commercial laundry equipment manufacturer, Speed Queen stands for innovation. As a leader in on-premises laundry technology, our electronically controlled laundry units will provide you with quality, efficiency, and the flexibility of micro-processor controls well into the 21st century. Since 1908 we have been committed to our tradition of quality products, backed by superior customer service.

Meeting Your Needs

Today's on-premises laundries require laundry equipment that is flexible, reliable, and delivers excellent cleanability every time. Speed Queen's softmount washer-extractor not only meets these requirements, it exceeds expectations.

flexibility

You can customize any of Speed Queen's microprocessor's programs to meet the needs of your laundry room operation while saving energy. Programmable steps include: water level, temperature (80° to 200°F; 27° to 93°C), automatic chemical injection, and variable wash and extract speeds.

cleanability

Linens last longer when they receive the right care. Not only do today's high performance fabrics require accurate temperature control to comply with temperature limits, but chemical supplies also perform more effectively within certain temperature ranges. Speed Queen's temperature controlled fill, which regulates hot and cold fill valves, allows complete control of wash temperatures as does optional steam or electric auxiliary heating.



reliability

At Speed Queen we're confident that our washer-extractors are built to last longer, and we are offering a three-year limited warranty to prove it.*

WASHER-EXTRACTORS

Variable Speed Drive

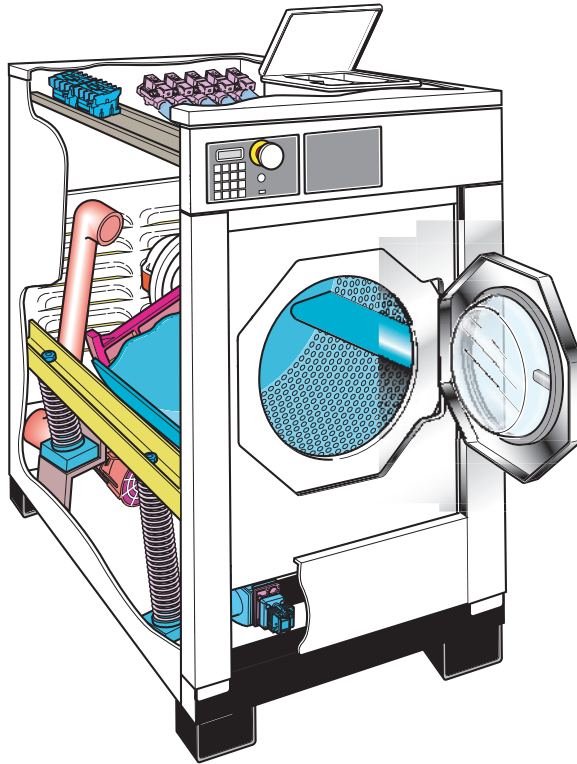
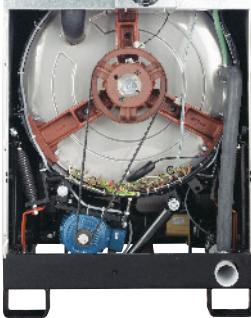
Since all fabrics have different extract speed requirements, our line of softmount washer-extractors have variable extraction speeds. A low extraction speed is ideal for synthetics, permanent press and blends. A mid-range extraction speed is ideal for mattress pads, blankets and spreads. A high extraction speed is ideal for terry and cotton items.

A higher G-force during extraction lowers the water retention of the fabrics being processed. A lower water retention also reduces the gas or electricity used during the drying process saving both time and money. Shorter dryer tumbling time also reduces linting and extends linen life. High speed extraction eliminates preconditioning of items to be ironed, saving energy while increasing production. High speed extraction removes a large percentage of moisture from laundry loads and may allow flatwork to be fed through flatwork finisher without prior drying.

Superior Performance Suspension

Extensive engineering efforts have developed a heavy-duty suspension system designed for superior

washing performance and to absorb out-of-balance load vibrations without the need for special foundations.



Stainless Steel Construction

Durable 304 stainless steel construction on the washer-extractors won't corrode, chip, crack or pit with normal use, and is extremely corrosive-resistant. In fact, the stainless exterior, top and front panels will maintain their lustrous appearance for years.



Flexible, User-Friendly Control

With the use of the micro-processor control, our washer-extractors

can be customized for specialized applications or operated using any of the 39 preset programs. There are a total of 99 cycles available.

A screen with step-by-step digital text and numeric instructions provides feedback to the operators of what cycle the washer is in and provides more detailed information for technical service during diagnostic checks.

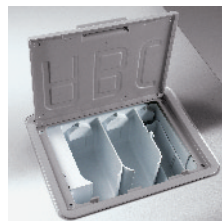
Easy Installation

Speed Queen's 18- lb through 55- lb. extra large capacity softmount washer-extractors fit through 36" door openings. Softmount washer-extractors require no additional cement base, making installation easier and less costly.



Automatic Supply Injection

The benefits of our Automatic Supply Injection System will show up in reduced waste of detergents and more consistent laundry results. A self-cleaning, multi-compartment dispenser automatically dispenses detergents for prewash and main wash and fabric softener for final rinse. In addition, tubing and electrical connections are provided on the rear of the machine for easy on-site hookup to a central liquid supply system.



SX18 - 75lb models



SX100-165lb models



Fully Programmable Electronic Control

Speed Queen can bring you the microprocessor-controlled laundry system with automatic and programmable operation. The microprocessor captures all of the features you need to make your laundry room operate efficiently.

Our washer-extractors offer 39 preset programs. Any of the programs can be erased or edited to customize your on-premises laundry.

Simple programming steps can be taken to adjust the washer-extractor for manual operation. Step-by-step LED instructions provide for simple operation and easy programming.

Softmount washer-extractors can also be programmed through a direct computer connection.

Heating Options

Speed Queen offers models that heat water via steam or electric heat. You can choose the heating option that best fits your on-premises laundry room.

3 YEAR WARRANTY



At Speed Queen, we're confident that our washer-extractors are built better to last longer and we're offering the following limited warranty to prove it:

Through three years*

Any part on the entire machine.

Through five years*

The bearings and bearing seal assembly.

Through five years*

Frame, cylinder and shaft assembly.

*Parts only. Labor not included.
See Speed Queen Warranty Bond for specifics.

WASHER-EXTRACTOR SPECIFICATIONS

	SX18	SX25	SX35	SX55	SX75	SX100	SX135	SX165	
Capacity - lb (kg)	18 (8)	25 (11)	35 (16)	55 (25)	75 (34)	100 (45)	135 (61)	165 (75)	
Width - in (mm)	26" (660)	26" (660)	30.8" (783)	35.4" (900)	41.8" (1060)	47.3" (1200)	47.3" (1200)	51.8" (1300)	
Depth - in (mm)	30.7" (780)	34.3" (870)	37.8" (960)	40" (1016)	46" (1168)	52.4" (1330)	59.1" (1500)	63.8" (1620)	
Height - in (mm)	40.6" (1031)	40.6" (1031)	47" (1194)	60.8" (1544)	61.4" (1560)	75.6" (1920)	75.6" (1920)	82.7" (2100)	
Cylinder Diameter - in (mm)	20.9" (530)	20.9" (530)	25.6" (650)	29.5" (750)	33.5" (850)	38.6" (980)	38.6" (980)	43.1" (1095)	
Cylinder Depth - in (mm)	13.6" (345)	17.3" (440)	19.7" (500)	20.9" (530)	21.1" (537)	23.5" (597)	30.5" (775)	30.5" (775)	
Cylinder Volume - cu.ft (liter)	2.7 (76)	3.4 (97)	5.9 (167)	8.3 (234)	10.8 (305)	15.9 (451)	20.7 (585)	25.8" (730)	
Door Opening Size - in (mm)	11.8" (300)	11.8" (300)	11.8" (300)	15.6" (395)	15.6" (395)	19.7" (500)	19.7" (500)	24.5" (622)	
Door Bottom to Floor - in (mm)	11" (279)	11" (279)	15.6" (395)	22" (559)	22" (559)	25.5" (648)	25.5" (648)	28" (711)	
Wash Speed (rpm)	10-50	10-50	10-50	10-50	10-50	10-50	10-50	10-50	
Distribution Speed (rpm)	82	82	74	69	65	61	61	100	
Extract Speed (rpm)	85-1000	85-1000	100-1000	250-1000	250-1000	250-800	250-800	250-750	
Extract G-Force (rpm)	19-296	19-296	23-363	26-418	30-475	34-350	34-350	344	
Water Inlet Conn. - in (mm)	3 x .75 (19)	3 x .75 (19)	3 x .75 (19)	3 x .75 (19)	3 x .75 (19)	4 x .75 (19)	4 x .75 (19)	3 x 1 (5.24) 1 x .75 (19)	
Steam Inlet Conn. - in (mm)	.38 (10)	.38 (10)	.38 (10)	.38 (10)	.38 (10)	.38 (10)	.38 (10)	.75 (19)	
Drain Connection Size - in (mm)	2" (51)	2" (51)	2" (51)	3" (76)	3" (76)	3" (76)	3" (76)	2 x 3" (76)	
Motor Size - HP (kw)	1 (.75)	1 (.75)	2 (1.5)	4 (3)	5.25 (4)	7.4 (5.5)	10 (7.5)	15 (11.5)	
Voltage/Hz/Phase Non-heat Circuit Breaker-FLA	200-240/50-60 1/3 15-6	200-240/50-60 1/3 15-6	200-240/50-60 1/3 15-12	200-240/50-60 1/3 15-12	200-240/50-60/3 20-12	200-240/50-60/3 25-17	200-240/50-60/3 30-17	200-240/50-60/3 40-25	
Voltage/Hz/Phase* Elect. heat Circuit Breaker-FLA	200-240/50-60/3 30-28	200-240/50-60/3 30-29	200-240/50-60/3 50-41	200-240/50-60/3 60-58	200-240/50-60/3 60-58	200-240/50-60/3 90-88	200-240/50-60/3 90-88	N/A	
Voltage/Hz/Phase* Non-heat Circuit Breaker-FLA	380-415/50-60/3 16-6	380-415/50-60/3 16-6	380-415/50-60/3 16-12	380-415/50-60/3 16-12	380-415/50-60/3 16-12	380-415/50-60/3 20-17	380-415/50-60/3 25-17	380-415/50-60/3 25-20	
Voltage/Hz/Phase Elect. heat Circuit Breaker-FLA	380-415/50-60/3 20-17	380-415/50-60/3 20-18	380-415/50-60/3 30-26	380-415/50-60/3 40-36	380-415/50-60/3 40-36	380-415/50-60/3 63-55	380-415/50-60/3 63-55	N/A	
Voltage/Hz/Phase* Circuit Breaker-FLA	440-480/50-60/3 15-6***	440-480/50-60/3 15-6**	440-480/50-60/3 15-12***	440-480/50-60/3 15-12	440-480/50-60/3 15-12	440-480/50-60/3 20-17	440-480/50-60/3 25-17	440-480/50-60/3 25-20	
Shipping Dimensions - in (mm)	H	44.9 (1140)	48.8 (1240)	51.6 (1310)	65 (1650)	68.1 (1730)	79.1 (2010)	79.1 (2010)	90.6 (2300)
	W	28.8 (732)	28.8 (732)	33.5 (850)	40.2 (1020)	45.7 (1160)	51.2 (1300)	51.2 (1300)	57.1 (1450)
	D	32.8 (832)	37.4 (950)	43.3 (1100)	45.3 (1150)	48.4 (1230)	56.3 (1430)	64.2 (1630)	67.8 (1720)
Net Weight - lb (kg)	520 (236)	531 (241)	765 (347)	1247 (570)	1907 (865)	3351 (1520)	3626 (1645)	4630 (2100)	
Shipping Weight - lb (kg)	624 (283)	639.5 (290)	1030 (467)	1380 (630)	2194 (995)	3741 (1697)	4017 (1822)	5113 (2319)	
Agency Approvals**	CE, ETL, ETLc	CE, ETL, ETLc	CE, ETL, ETLc	CE, ETL, ETLc	CE, ETL, ETLc	CE, ETL, ETLc	CE, ETL, ETLc	CE, ETL, ETLc	

* Special order may require longer time, check with factory.

** Agency approvals may vary depending on configuration. Consult factory for details.

*** CE only.

Voltages above or below listed may require a buck-boost transfer.

Due to continuous product improvement, design and specifications subject to change without notice. Features and certifications may vary by model.

© Copyright 2004 Alliance Laundry Systems LLC



www.speedqueen.com

Speed Queen®
Alliance Laundry Systems