

**UW Series Hardmount  
Washer-Extractors**

**UniMac**

**35 lb Washer-Extractor  
60 lb Washer-Extractor  
80 lb Washer-Extractor  
100 lb Washer-Extractor  
125 lb Washer-Extractor**



***Expert Solutions from the Laundry Experts***

# UniMac

## Your Solution Starts Here

### 5 key points:

- Labor-Cost Savings
- Utility-Cost Savings
- Value For Your Money
- Proven Performance
- Warranty

UniMac has been manufacturing commercial laundry equipment for over 50 years. By now, we know a thing or two about what it takes to cost effectively operate a laundry room. Through the years we have helped our customers to improve working conditions for laundry room staff, lower operating expenses in their department and increase cash flow for their company. Relax, you can count on UniMac to provide the Expert Solution for your particular challenge. That's why we're called the Laundry Experts.

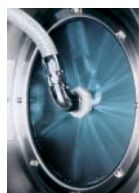


### 1 Labor-Cost Savings

Did you know labor costs eat up 50% of your laundry dollar? Imagine the thousands of dollars you'd save if you could reduce, by even 30 minutes daily, the man-hours it takes to process laundry!

UniMac's UWPV Series Washer-Extractor transforms your dream into reality.

- **4 Fast-Fill Water Valves** (instead of the customary 2) fill UWPV models much faster, shaving valuable minutes off every cycle.
- Extraction Speeds of **up to 300 G-Force**—that's 2-3 times the G's of most machines—aid UniMac's UWPV models in reducing the amount of moisture left in washloads. This greatly reduces drying time saving significantly on labor costs.
- Our **Advanced Computer Control** accurately senses drain time completion, while precisely advancing to the next step in the wash cycle. Our **smart drain** saves time and money, when compared with less expensive models, which have fixed drain times that may lengthen the total cycle time by several minutes.
- A **Rapid Jetspray Rinse** saves nearly 3 minutes on every rinse step! The spray rinse pulls water through linens, allowing water to drain immediately, rather than cycling through the time consuming fill, agitation and drain phases of the traditional bath rinse. This is one of UniMac's most impressive timesaving features.
- The **Over night Delayed Start** feature gives you a 30-minute head start each day! By loading the washer and selecting the programmable delayed start cycle, your linens will be ready for the dryer immediately the next morning. This head start can save 30 minutes per day.
- **Large Capacity Cylinders** mean fewer loads per day, reducing even further the number of labor hours you need to get the laundry done.



## Utility-Cost Savings

Utility costs account for approximately 10% of your laundry dollar. By selecting laundry equipment with advanced features, utility costs can be controlled. If a typical laundry facility processes around 4000 cycles per year, even small savings per cycle will really add up. UniMac's UWPV series has the solution for controlling your utility costs:

### Electricity

Save 40% or more with its state-of-the-art **frequency drive system**. It saves money by gradually and efficiently ramping up to extraction speed. You'll also save electricity with our industry leading short cycle times created with our **rapid jet spray rinse**, four fast fill water valves and **smart drains**.

### Gas

Dryer time is shorter due to 300 G-Force super high extraction speeds. By operating your dryer less each day, you reduce your **cost of energy by \$100's per year**.

### Water

Large capacity cylinders help you reduce the number of wash cycles per day...per month...per year! These savings can be as much as 10% under competitor's models! Selected models feature UniMac's exclusive Water Saving Systems™ (WSS).



## Value For Your Money

Cost and value are not synonymous. Often the lowest-priced laundry equipment ends up being the most expensive to own in terms of maintenance, performance and ease-of-use. One way of measuring a washer-extractor's value is to take a look at **standard features**.

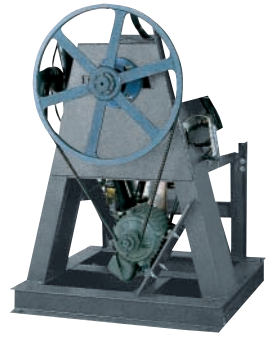
UniMac is committed to providing you with the maximum value. Many of the features considered **"add-ons" by our competitors** are standard on our UWPV washer-extractors.

Important standard features such as:

- Temperature Controlled Fill
- Thermal Cool Down
- Overnight Soak
- Overflow Rinse
- Stainless Steel Construction
- Brass Fill Valves
- Polypropylene Chemical Supply Dispenser
- Programmable Drive System
- 2 Wash Speeds

## Proven Performance

You want your decision to be a lasting one, so choose a washer-extractor that is durable and virtually maintenance-free, with a proven performance history. You won't find another washer-extractor with the durability and performance record of UniMac's UWPV series.



Our heavy-duty **Gamma A-frame**, made of **four-inch H-beam**, has been the industry model of strength and durability. Our low maintenance **V-Belt Drive** provides high efficiency, dependability and smooth operation, without unnecessary transmissions or clutches. With fewer moving parts, our drive system requires less maintenance.

UniMac's expertise is the result of over 50 years as the leader in technological innovation. We've led the industry in developing technologically advanced solutions, such as **Microprocessor Controls**, **Frequency Drive System**, **Rapid Jet Spray Rinse**, **Super-high G Force**, **2-speed Wash**, **Water Saving System™** and **Starch Buster™**.

We receive high marks from our peers within the commercial laundry industry, and most would agree: UniMac was the first at being the best, and UniMac has been the best the longest. UniMac is the industry leader.



## Warranty

Our warranty is your insurance policy. We demonstrate our confidence in our UWPV's by giving you the best warranty in the industry. UniMac provides a **5-year warranty on the frame, basket, shaft, bearings and seals** if failure or breakage should occur during normal operation due to defects in material or workmanship. A full 3-year warranty is also issued to the original purchaser on all other parts.

# Specifications

	UW35 2 spd**	UW35 3 spd**	UW35 PV - 7spd	UW60 2 spd**	UW60 3 spd**	UW60 PV - 7spd	UW80 PV - 7spd	UW100 PV - 7spd	UW125 PV - 7spd
Control Options	B,P	P	P	B,P	P	P	P	P	P
Capacity (lb/kg)	35 (15.9)	35 (15.9)	35 (15.9)	60 (27.3)	60 (27.3)	60 (27.3)	80 (36.4)	100 (45.5)	125 (56.9)
Cylinder Diameter (in/mm)	26.25 (667)	26.25 (667)	26.25 (667)	32 (813)	32 (813)	32 (813)	36 (914)	36 (914)	42 (1067)
Cylinder Depth (in/mm)	18.38 (467)	18.38 (467)	18.38 (467)	20 (508)	20 (508)	20 (508)	21 (533)	27 (686)	24 (610)
Cylinder Volume (cu. ft./liters)	5.76 (163)	5.76 (163)	5.76 (163)	9.31 (264)	9.31 (264)	9.31 (264)	12.4 (350)	15.9 (450)	19.24 (544)
Height (in/mm)	55.5 (1410)	55.5 (1410)	55.5 (1410)	64.5 (1638)	64.5 (1638)	64.5 (1638)	68.5 (1740)	68.5 (1740)	72 (1829)
Width (in/mm)	32.5 (826)	32.5 (826)	32.5 (826)	36.63 (930)	36.63 (930)	36.63 (930)	41.5 (1054)	41.5 (1054)	52 (1321)
Depth (in/mm)	38.25 (972)	38.25 (972)	43.63 (1108)	45 (1143)	45 (1143)	45 (1143)	51.5 (1308)	54.5 (1384)	58 (1473)
Door Opening Size - (in/mm)	14.34 (364)	14.34 (364)	14.34 (364)	17.5 (445)	17.5 (445)	17.5 (445)	17.5 (445)	17.5 (445)	20 (508)
Door Bottom To Floor - (in/mm)	23.75 (603)	23.75 (603)	23.75 (603)	28.25 (718)	28.25 (718)	28.25 (718)	29 (737)	29 (737)	29 (737)
Motor Size (kW)	1.8 (1.3)	3 (2.2)	3 (2.2)	3 (2.2)	3.5 (2.6)	5 (3.7)	7.5 (5.6)	7.5 (5.6)	10 (7.5)
Gentle Wash Spd rpm	N/A	N/A	26	N/A	N/A	26	26	26	26
Wash Speed rpm	50	45	42	44	42	40	40	40	37
Distribution Spd rpm	N/A	75	83	N/A	67	71	73	70	62
Medium Speed rpm (G-force)	N/A	N/A	328 (40)	N/A	N/A	297 (40)	325 (54)	325 (54)	260 (40)
High 1 Extract rpm (G-force)	504 (95)	597 (133)	534 (106)	465 (98)	561 (143)	483 (106)	456 (106)	456 (106)	380 (86)
High 2 Extract rpm (G-force)	N/A	N/A	613 (140)	N/A	N/A	555 (140)	524 (140)	524 (140)	485 (140)
High 3 Extract rpm (G-force)	N/A	N/A	898 (300)	N/A	N/A	813 (300)	766 (300)	766 (300)	580 (200)
Drain Diameter (in/mm)	2.38 (60)	2.38 (60)	2.38 (60)	3 (76)	3 (76)	3 (76)	(2 ea.) 3 (76)	(2 ea.) 3 (76)	(2 ea.) 3 (76)
Steam Connection (in/mm)	.5 (13)	.5 (13)	.5 (13)	.5 (13)	.5 (13)	.5 (13)	.5 (13)	.5 (13)	.75 (19)
Water Inlet Connection - (in/mm)	.75 (19)	.75 (19)	.75 (19)	.75 (19)	.75 (19)	.75 (19)	.75 (19)	.75 (19)	1(2ea)/.75(2ea) (25)
Net Weight (lb/kg)	750 (341)	750 (341)	1030 (468)	1136 (515)	1229 (557)	1300 (590)	1730 (785)	1770 (805)	2420 (1100)
Agency Approvals*	ETL, ETLc	ETL, ETLc	ETL, ETLc, CE	ETL, ETLc	ETL, ETLc	ETL, ETLc, CE	ETL, ETLc, CE	ETL, ETLc, CE	ETL, ETLc, CE



**AU03-203**

Standard domestic voltage 208-240/60/3. For electrical specs, circuit breaker requirements and full load amperages see your authorized UniMac distributor. Manufacturer strongly recommends using a circuit breaker instead of fuses. Use 3-pole circuit breakers for 3-phase machines.

Due to continuous product improvements, design and specifications subject to change without notice. All CE approved models available in 50-cycle. The quality management systems at all Alliance Laundry Systems facilities have been awarded ISO 9001 certification.

\* Agency approvals may vary depending on configuration. Consult factory for details.

\*\* Two and three speed washers may not include all of the features within the brochure.

**www.uniwash.com**

Alliance Laundry Systems  
Shepard Street, Ripon, WI 54971 Telephone: 1-800-587-5458

